 SLO.DOA.002	<h2>Service Information</h2>	Document Number
		SI-100-005 LSA
		Issue: A.01
Pipistrel LSA s.r.l. Via Aquileia 75 34170 Gorizia, Italy, EU www.pipistrel.eu Phone: 0481 522000	Introduction of a new maintenance task (inspection of elevator bell-crank attachment bolts)	Supersedes Doc. Number
		N/A
		Page 1 of 3
Aircraft make	Aircraft model	Affected serial numbers
PIPISTREL	Sinus, Virus, Virus SW, Alpha Trainer	See cover page
Date of release	Date of effect	Date of required corrective action
26 January 2016	26 January 2016	N/A

Introduction of a new maintenance task


- Category:** INFORMATION ONLY
- Subject:** Inspection of elevator bell-crank attachment bolts
- Affected Aircraft s/n.:** Alpha Trainer: all
Sinus, Virus, Virus SW: all
- Time of Compliance:** At next 100 hr service interval
- Reason:** Inspection for atmospheric corrosion
- Actions:** Inspection
- Documents:** Future releases of POH, AOI, MM.
- Required Material:** N/A
- Mass and Balance:** Not Affected
- Required Records:** N/A

Verified and approved under the
authority of DOA-No.: SLO.DOA.002

Date:

Head of Airworthiness
Design Organisation SLO.DOA.002

Date of approval:

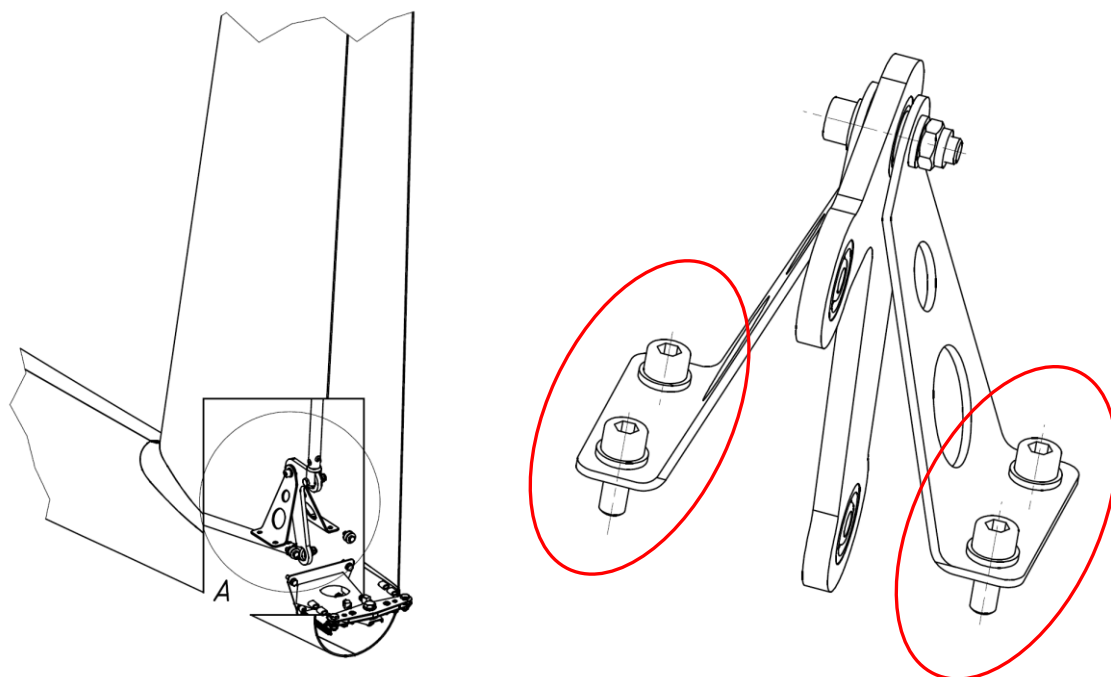
 SLO.DOA.002	<h1>Service Information</h1>	Document Number
		SI-100-005 LSA
Pipistrel LSA s.r.l. Via Aquileia 75 34170 Gorizia, Italy, EU www.pipistrel.eu Phone: 0481 522000	Introduction of a new maintenance task (inspection of elevator bell-crank attachment bolts)	Issue: A.01
		Supersedes Doc. Number
		N/A
		Page 2 of 3
Aircraft make	Aircraft model	Affected serial numbers
PIPISTREL	Sinus, Virus, Virus SW, Alpha Trainer	See cover page
Date of release	Date of effect	Date of required corrective action
26 January 2016	26 January 2016	N/A

Reason:


It was noticed in the field that certain older aircraft exposed to a saline environment and/or those predominantly parked outside started showing evidence of surface corrosion on the bell-crank attachment bolts. An inspection is therefore put in place as part of the 500 hr inspection.

Accomplishment instructions:

At next 100 hr service interval Inspect elevator bell-crank attachment bolts for corrosion and replace on condition with PN 5010655. To access the bell-crank it is necessary to remove the rudder. Make sure the rudder is reintroduced and secured properly after the inspection.



Thereafter, carry out inspection every 500 hrs.

 SLO.DOA.002	<h2>Service Information</h2>	Document Number
		SI-100-005 LSA
		Issue: A.01
Pipistrel LSA s.r.l. Via Aquileia 75 34170 Gorizia, Italy, EU www.pipistrel.eu Phone: 0481 522000	Introduction of a new maintenance task (inspection of elevator bell-crank attachment bolts)	Supersedes Doc. Number
		N/A
		Page 3 of 3
Aircraft make	Aircraft model	Affected serial numbers
PIPISTREL	Sinus, Virus, Virus SW, Alpha Trainer	See cover page
Date of release	Date of effect	Date of required corrective action
26 January 2016	26 January 2016	N/A

Personnel and site requirements: as required for the 500 hr service interval

Other publications: Next issue of POH, AOI, MM will include reflect the content of this SI.

Manhour estimation: 30 min

Additional Questions?

Contact Pipistrel Maintenance department via telephone: +386 5 364 38 83 or email: leon.brecelj@pipistrel.si

END OF SERVICE INFORMATION.